

# Michael Williams

**Engineering Ltd**

**Queens Business Park,  
Wilbraham Road, Fulbourn,  
Cambridge CB21 5ET**

**Tel 01223 88 22 22**

**Fax 01223 88 25 98**

**E-mail: [info@bigbrute.co.uk](mailto:info@bigbrute.co.uk)**

**Web: [www.bigbrute.co.uk](http://www.bigbrute.co.uk)**



No 1  
Ver 1.1

## Removing and Refitting your Bangalore Broadside Circuit

# 1.0 Introduction

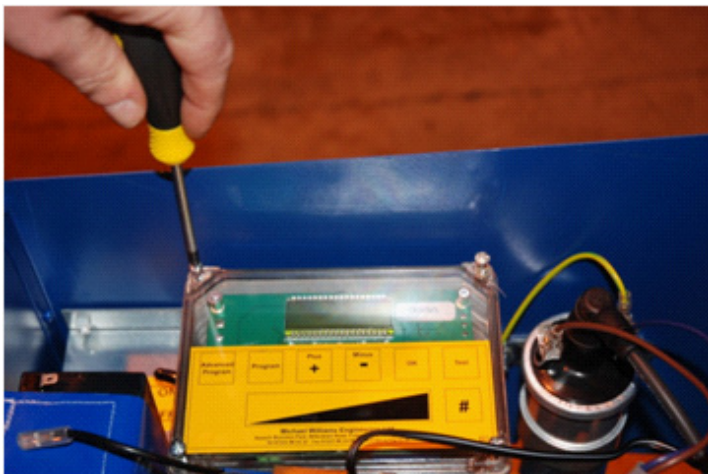
- 1.1 It's easy to remove your Bangalore Broadside circuit from the control box if you need to send it in to us.

## 2.0 Switch Off and Disconnect

- 2.1 Always wear ear protection before approaching the Bangalore Broadside Bird Scarer – you don't know when it might go off.
- 2.2 Always switch off the Bangalore Broadside with the Safety Switch, disconnect the battery and turn off and disconnect the gas supply before attempting open the control box. Refer to your operating instructions for full details.

## 3.0 Unscrew the control box panel

- 3.1 Using a Posi-drive screwdriver, unscrew and retain the four screws at each corner of the control box panel. See Picture 1 below.



Picture 1 Unscrew the four screws at the corners of the control box panel.

## 4.0 Unplug the circuit board

- 4.1 Carefully open the lid of the control box from left to right. See Picture 2 below.
- 4.2 Carefully unplug the 3 green cable connection blocks from the circuit board or unscrew wires from the terminals.

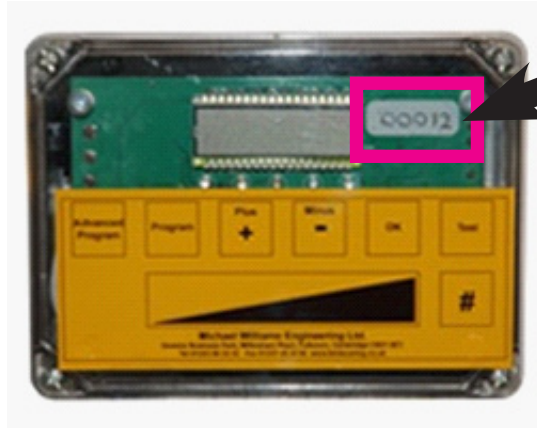


Picture 2 Open the lid of the control box.

- 4.3 **Tip:** hold and pull the connection block when unplugging, not the cables themselves.
- 4.4 Damage may occur if you touch any of the components on the circuit board.
- 4.5 **Note:** If you're sending in your circuit board for upgrade to the 7-Day Timer, please make a note of the circuit's serial number. This is found on the top-right of the circuit board, next to the digital display (see Picture 3 below): and include the number on any correspondence that is sent with the circuit board.

## 5.0 Package up the circuit board

- 5.1 Wrap the circuit board in bubble wrap and box it up to prevent crush damage. A padded envelope does not offer sufficient protection.



Picture 3 Where to find your circuit board's serial number.

**Note:** Please enclose your name and address with the circuit board so we know where to return it.

**Send your control box to:**

**Michael Williams Engineering Ltd**

**Queen's Business Park, Wilbraham Road**

**Fulbourn, Cambridge, CB21 5ET**

## **6.0 Refitting the circuit board**

- 6.1** Reconnect the 3 green cable connection blocks or rescrew the wires to the underside of the circuit board as detailed on pages 6 and 7.

**Tip:** each connection block will only fit one way onto the connector – you won't be able to connect them up incorrectly.

- 6.2** Replace the front panel. Replace and tighten the screws.
- 6.3** Reconnect up your battery, gas supply and turn on the Safety Switch.

**Note** - It is possible that for the cables to become pulled away from the connectors when the lid is screwed back in place. Ensure that the wires do not bunch up inside the box before refitting the lid.

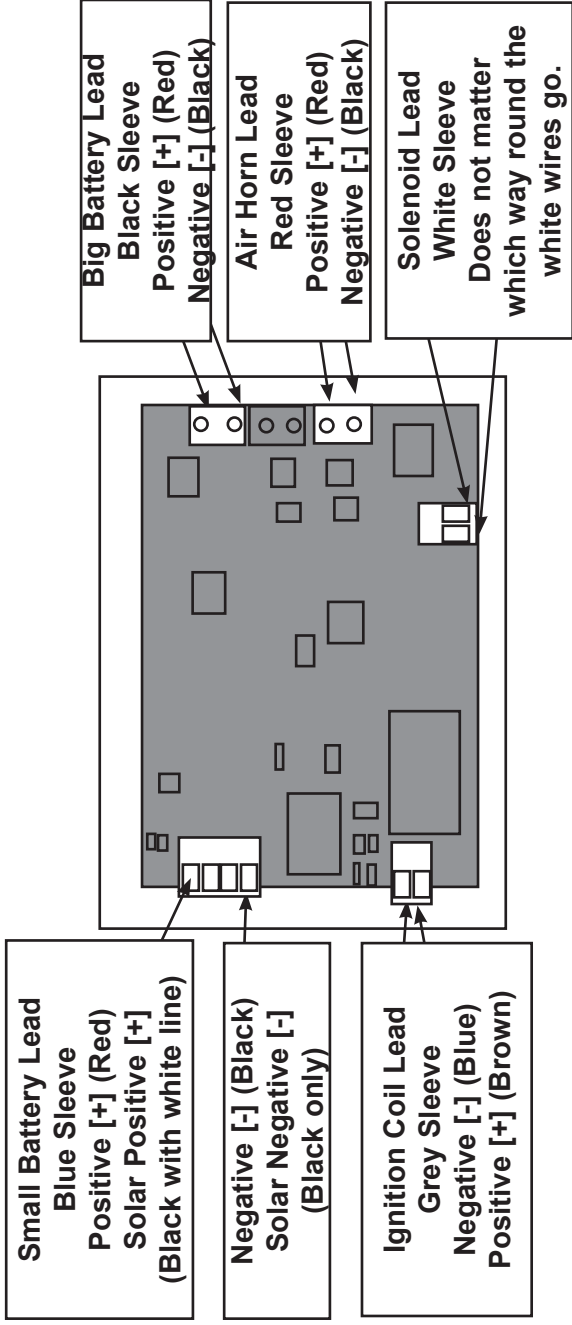
## **7.0 Help!**

- 7.1** If you need help with any of this, please give me a ring during office hours. I'd be more than happy to talk you through it:

**Tel: 01223 88 22 22**

## Bangalore Broadside Circuit Board Connections Picture





Bangalore Broadside Circuit Board Connections Diagram

Bangalore Birdscarers, accessories and spares are available from:

Michael Williams Engineering Ltd  
Queen's Business Park  
Wilbraham Road  
Fulbourn  
Cambridge CB21 5ET  
UK

Tel: 01223 88 22 22

Fax: 01223 88 25 98

Email: [info@birdscaring.co.uk](mailto:info@birdscaring.co.uk)

Web: [www.birdscaring.co.uk](http://www.birdscaring.co.uk)